

# TROUBLE SHOOTING

TROUBLE	CAUSE	REMEDY
1. Jack feels "spongy" when operating	Air in the hydraulic system.	1. Hold the lever in the up position, then pump the loop-handle up and down while holding lever up.
	Insufficient hydraulic oil	2. Remove the oil plug (25) and add oil.
2. The forks do not rise when the valve handle is in the lifting position.	Insufficient hydraulic oil	See remedy 2.
	The lowering arm assembly does not open	3. Adjust the valve chain with adjusting nut (73) or check the release piston (34).
	Leak from valve cone (16) assembly	4. Replace steel ball (19).
3. The forks drop after every pump stroke	Air in the hydraulic system	See remedy 1.
	Leak from the valve cone (16)	5. Replace valve cone (16), valve housing (17), o-ring (18), and o-ring (13).
4. "Lowering Action" does not function or lowers slowly	Insufficient travel of lowering arm	Adjust the valve chain and adjusting nut (73).
5. The forks drop when the handle is in the neutral position.	The lowering arm does not open properly	See remedy 3.
	Leak from the valve cone	See remedy 5.
	Leak from seal rings in the bottom plate	6. Replace u-cup packing (43).
6. Pumping still occurs when valve handle is in the neutral position.		See remedy 3.
7. Oil leaks from the lowering arm assembly	Seal ring damaged or worn out	7. Replace o-ring (32) and o-ring (38).

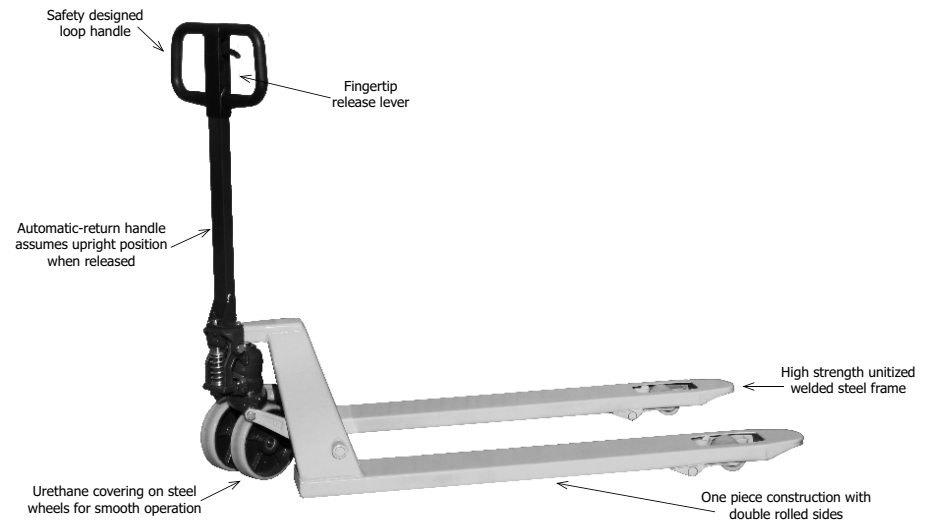
## NOTES:

When overhauling the hydraulic system, total cleanliness should be observed.

Dismantled parts should be carefully cleaned and inspected. Always change o-ring and seal washers when overhauling the hydraulic system.

Recommended hydraulic oil SAE #10.

**WESELY INTERNATIONAL**  
 3680 Chestnut Street, Scottdale, GA 30079  
 404-292-7441, 404-292-8469 Fax, 800-241-2869  
 www.wesleyinternational.com



## HOW TO OPERATE TRUCK:

1. Pull the release lever up. The truck will lower.
2. Push the release lever down, you can now pump the truck up.

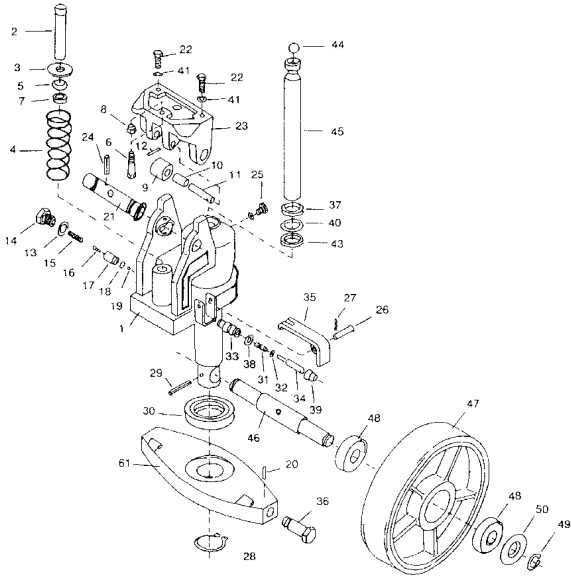
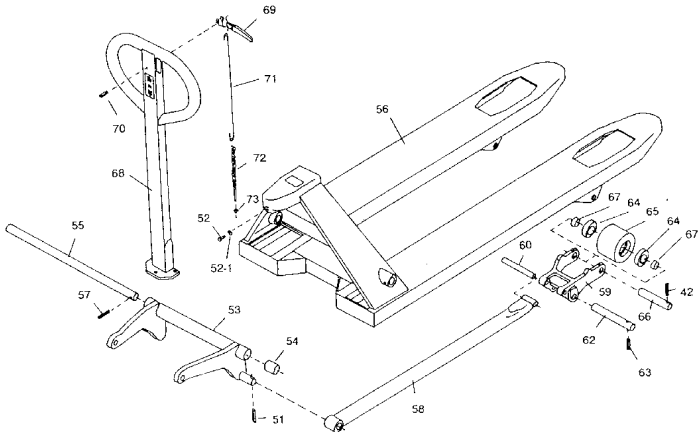
## MAINTENANCE

1. Do not Overload.
2. When truck cannot lift to full height, remove oil plug, fill with hydraulic oil.
3. Lubricate the axles of wheels and all moving parts.
4. Do not leave pallet truck under a heavy load for an extended time when not in use. Release hydraulic press on pump to lower truck.

## HANDLE ASSEMBLY INSTRUCTIONS

1. Use schematic as a reference.
2. Position yourself behind the truck with forks pointing away.
3. Remove 3 screws (22) from handle base (23).
4. Holding handle (68) in one hand, and a screwdriver in the other, place screwdriver in one of the 3 screw holes in handle base (23). Pull on the screw driver so that the handle base (23) tilts back until the center hole in the handle base and axle (21) are aligned.
- 5 Slip chain (72) thru both holes.
6. Replace 3 screws (22) attaching handle (68) to handle base (23).

# PALLET TRUCK PARTS LIST



DWG #	PART #	DESCRIPTION	QTY	DWG #	PART #	DESCRIPTION	QTY
1	SL-01	Pump Assembly	1	36	IN-36	Table Bolt	2
2	SL-02	Piston	1	37	SL-36	Dust Deal	1
3	SL-03	Washer	1	38	SL-38	O-Ring	1
4	SL-04	Spring, Handle Return	1	39	SL-39	Rubber Boot	1
5	SL-05	Dust Seal	1	40	SL-40	O-Ring	1
6	SL-06	Screw	1	41	SL-41	Spring Washer	1
7	SL-07	U-Cup Packing	1	42	SL-42	Pin	2
8	SL-08	Nut	1	43	SL-43	U-Cup Packing	1
9	SL-09	Roller, Handle Base	1	44	SL-44	Ball, Pivot	1
10	SL-10	Bushing, Handle Base	1	45	SL-45	Lift Ram Piston	1
11	SL-11	Axle, Handle Base	1	46	IN-46	Steer Wheel Axle	1
12	SL-12	Roll Pin	1	47	IN-47	Steer Wheel, Polyurethane	2
13	SL-13	Packing	1	48	IN-48	Ball Bearing, Steer Wheel	4
14	SL-14	Screw	1	49	IN-49	Locking Ring	2
15	SL-15	Spring	1	50	IN-50	Steering Wheel Cap	2
16	SL-16	Valve Cone	1	51	IN-51	Roll Pin	2
17	SL-17	Valve Housing	1	52	IN-52	Screw	1
18	SL-18	O-Ring	1	53	IN-53	Bellcrank	1
19	SL-19	Ball	1	54	IN-54	Bushing	2
20	SL-20	Roll Pin	2	55	IN-55	Torsion Axle	1
21	SL-21	Axle, Handle Base	1	56	IN-56	Frame	1
22	SL-22	Screw	2	57	IN-57	Locking Pin	1
23	SL-23	Handle Base	1	58	IN-58	Push Rod	2
24	SL-24	Roll Pin	1	59	IN-59	Load Wheel Fork	2
25	SL-25	Oil Plug	1	60	IN-60	Axle, Push Rod	2
26	SL-26	Axle Pin	1	61	IN-61	Load Bar	1
27	SL-27	Pin	1	62	IN-62	Axle, Load Wheel Fork	2
28	SL-28	Locking Ring	1	63	IN-63	Roll Pin	2
29	SL-29	Roll Pin	1	64	IN-64	Ball Bearing, Load Wheel	4
30	SL-30	Thrust Bearing	1	65	IN-65	Ball Bearing, Load Wheel	4
31	SL-31	Spring	1	66	IN-66	Axle, Load Wheel	2
32	SL-32	O-Ring	1	67	IN-67	Washer	4
33	SL-33	Release Housing	1	68	SL-68	Handle	1
34	SL-34	Release Plunger	1	69	SL-69	Release Linkage	1
35	SL-35	Lowering Arm	1	73	SL-73	Nut	1