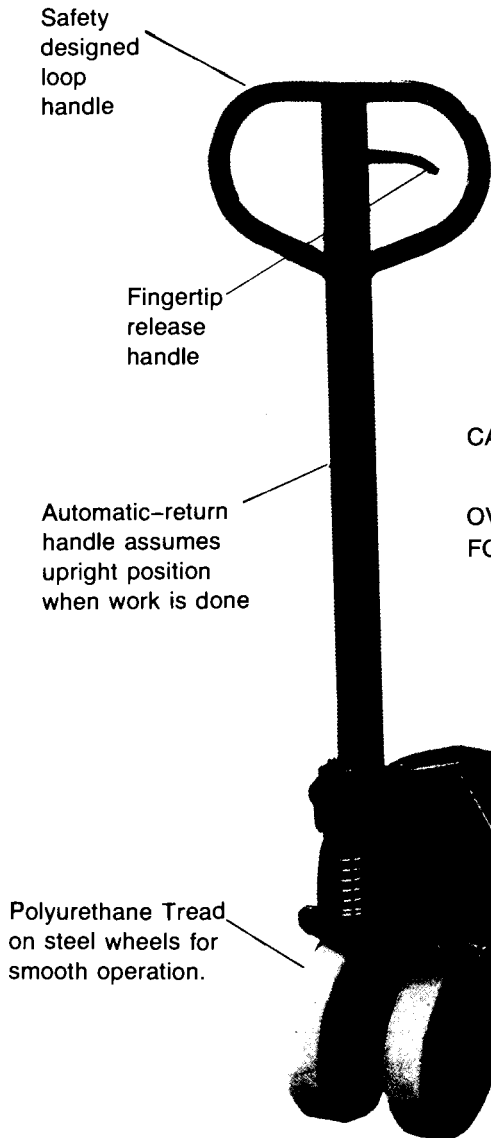


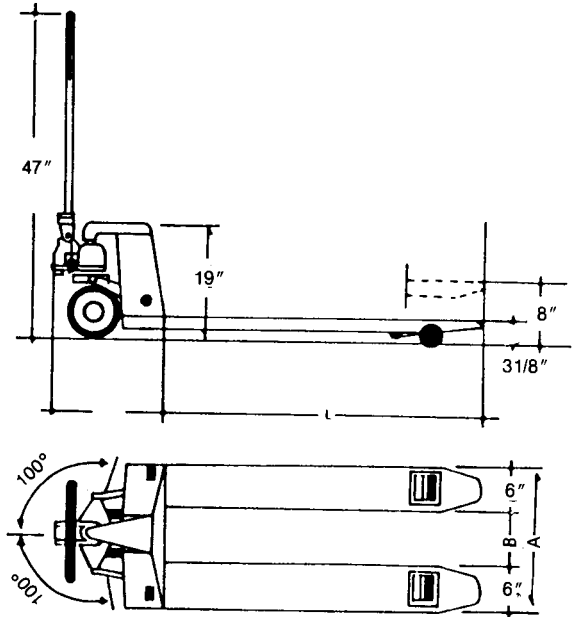
INSTRUCTION MANUAL

READ INSTRUCTION MANUAL CAREFULLY BEFORE OPERATING



CAPACITY: 5000 LBS
6000 LBS

OVER WIDTH (A): 27" - 24" - 20"
FORK LENGTH (L): 48" - 42" - 36"



High strength unitized welded steel frame

One piece construction with double rolled sides

ASSEMBLY

1. TAKE OUT 3 PCS HEX SCREWS & WASHERS ON HANDLE BASE. (NO. 23).
2. PLACE THE HANDLE WITH CHAIN (NO. 68) ON HANDLE BASE (NO. 23) THEN TIGHTEN 3 PCS SCREWS.
3. PULL THE HANDLE DOWN, SLIP THE CHAIN THRU THE AXLE HOLE (NO. 21) INSERT THE CHAIN WITH THE KNOB INTO THE SLOT OF THE LOWERING ARM (NO. 35)

HOW TO OPERATE:

- (1) HOLD THE RELEASE HANDLE UP. THE TRUCK WILL LOWER.
 - (2) LET THE RELEASE HANDLE DOWN, TO PUMP THE TRUCK UP
 - (3) THE NEUTRAL POSITION FREES THE HYDRAULIC PRESSURE, MAKING IT EASIER TO MOVE THE LOAD.
- * PLEASE SEE THE OPERATION DIAGRAM ON THE BACK OF THE HANDLE.

MAINTENANCE

1. DO NOT OVERLOAD.
2. WHEN JACK DOES NOT LIFT TO FULL HEIGHT, REMOVE OIL PLUG, THEN ADD HYDRAULIC OIL.
3. LUBRICATE THE AXLE OF ROLLER WHEEL AND ALL MOVING PARTS AS REQUIRED.
4. DO NOT LEAVE PALLET TRUCK UNDER LOAD WHEN NOT IN USE. RELEASE HYDRAULIC PRESSURE TO LOWER THE FORKS AT NO LOAD.

RECOMMENDED OIL; DEXTRON II



**WESLEY
INTERNATIONAL
CORPORATION**

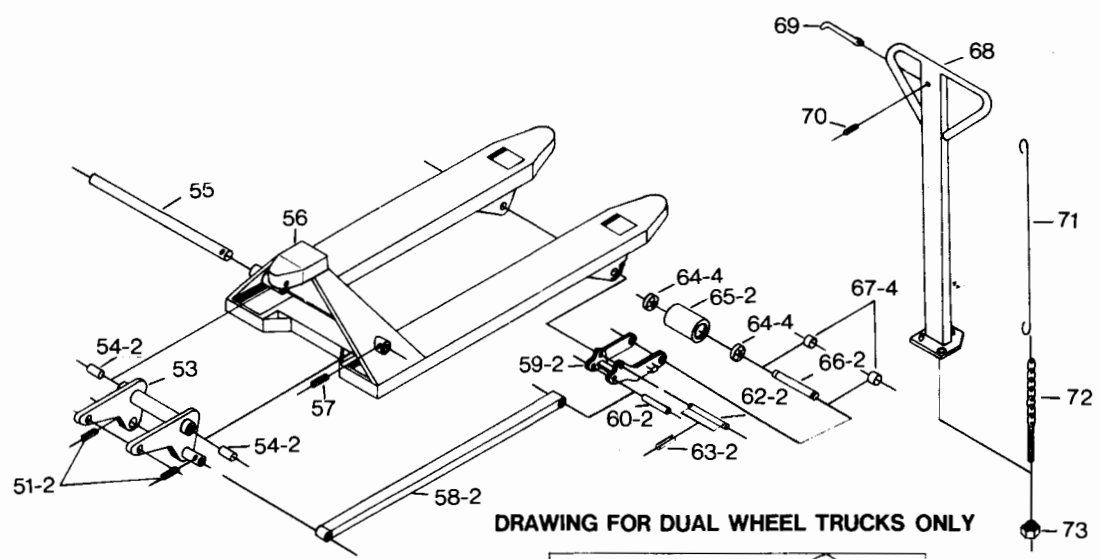
PALLET TRUCK PARTS LIST

Part. No.	DESCRIPTION	Number RQD.		DESCRIPTION	Number RQD.
2.	Piston	1	48 - 4	Ball Bearing	4
4.	Spring	1	49 - 2	Locking Ring	2
5.	Dust Seal	1	50 - 2	Steering Wheel Cap	2
7.	U-Packing	1	51 - 2	Spring Pin	2
9.	Roller	1	53.	Torion Tube Compl. for Width 520	1
10.	Bushing	1		Torsion Tube Comple. for Width 680	1
11.	Axle	1	54 - 2	Bushing	2
13.	Packing	1	55.	Axle for Torsion Tube., Width 520	1
14.	Screw	1		Width 680	
15.	Spring	1	56.	Fork Body	1
16.	Valve Cone	1	57.	Locking Pin	1
17.	Valve Housing	1	58 - 2	Push Rod	2
18.	O-Ring	1	59 - 2	Load Wheel Fork	2
19.	Ball	1	60 - 2	Axle (For Push Rod)	2
20-2	Spring Pin	2	61.	Pressure Plate	1
21.	Axle (For Handle)	1	62 - 2	Axle (For Load Wheel Fork)	2
22(1) - 3	Screw	3	63 - 2	Roll Pin	2
22(2) - 3	Spring Washer	3	64 - 4	Load Wheel Bearings	4
23.	Handle Base	1	65 - 2	Load Wheel	2
24.	Spring Pin	2	66 - 2	Axle (For Load Wheel)	2
25.	Oil Plug	1	67 - 4	Washer	4
26.	Axle Pin	1	68.	Handle	1
27.	Pin	1	69.	Release handle	1
28.	Locking Ring	1	70.	Spring Pin	1
29.	Spring Pin	1	71.	Release Rod	1
30. -N	Thrust Bearing	1	72.	Chain	1
31.	Spring	1	73.	Nut	1
32.	O-Ring	1			
33.	Release Housing	1		DUAL LOAD WHEEL ASSEMBLY PARTS	
34.	Release Piston	1			
34-B.	Rubber Boot for Plunger	1	74 - 2	Dual Load Wheel Fork	2
35.	Lowering Arm	1	75 - 2	Bush Tube	2
36-2.	Table Bolt	2	76 - 2	Bolt (For Dual Load Wheel)	4
37.	Dust Seal	1	77 - 2	Washer	4
38.	O-Ring	1	78.	Load Wheel	4
40.	O-Ring	1	79 - 2	Load Wheel Bearings	8
43.	U-Packing	1	80 - 2	Washer	8
44.	Ball	1	81 - 2	Nut	4
45.	Ram Piston	1			
46.	Wheel Shaft	1			
47-2.	Steering Wheel, Polyrethane	2			

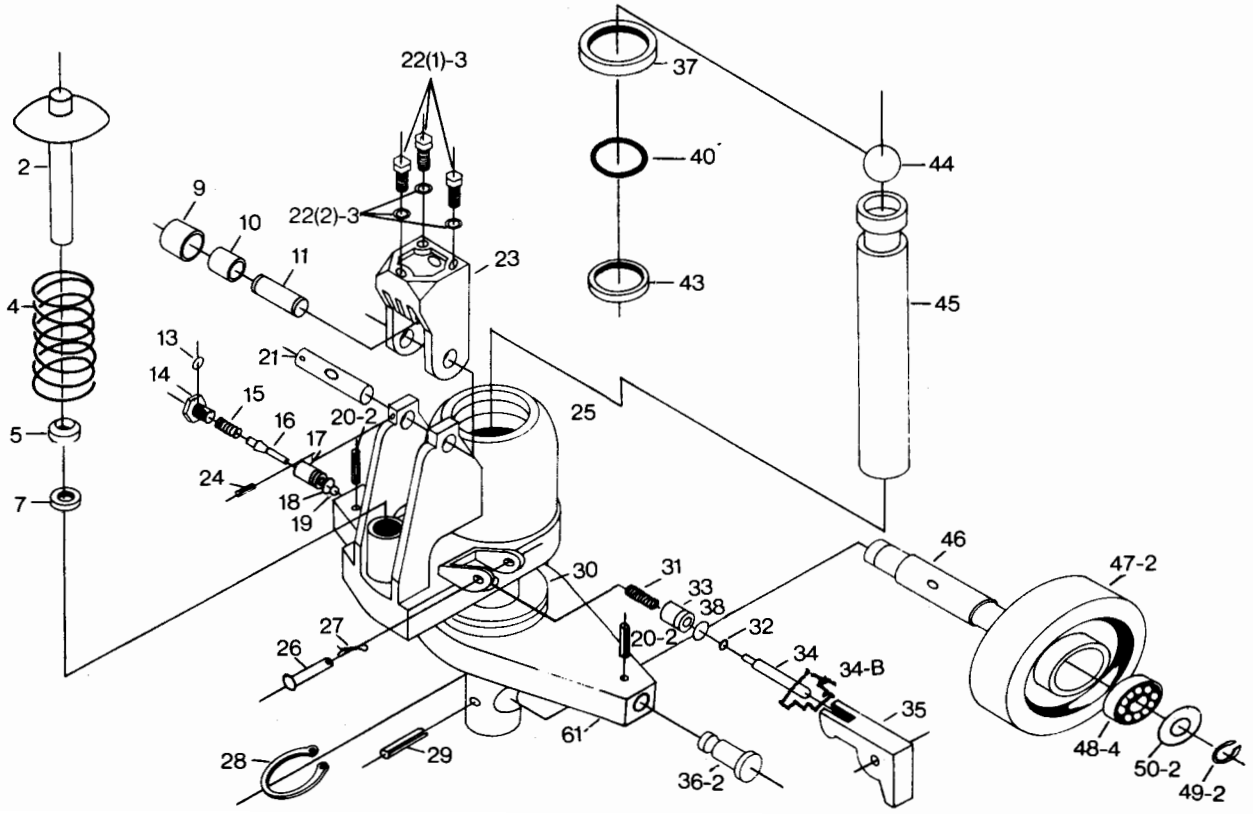
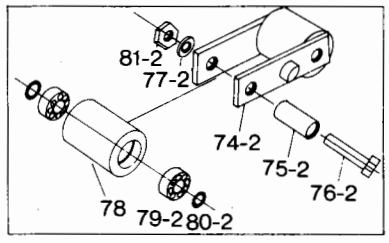
Order by Part Number Only.

DIAGRAM

Use the following parts diagram when ordering spare parts.



DRAWING FOR DUAL WHEEL TRUCKS ONLY



TROUBLE SHOOTING

TROUBLE	CAUSE	REMEDY
1. JACK FEELS "SPONGY", WHEN OPERATING	AIR IN THE HYDRAULIC SYSTEM	1 HOLD THE LEVER UP, THEN PULL THE LOOP-HANDLE UP AND DOWN SEVERAL TIMES
	INSUFFICIENT HYDRAULIC OIL	2 REMOVED THE OIL PLUG (NO. 25) ADD OIL
2. THE FORKS DO NOT RISE WHEN THE VALVE HANDLE IS IN LIFTING POSITION	INSUFFICIENT HYDRAULIC OIL	SEE REMEDY 2
	DOES NOT OPEN VALVE CONE	3 ADJUST THE VALVE CHAIN WITH ADJUSTING NUT (NO. 73) OR CHECK THE RELEASE PLUNGER (NO. 34)
	LEAK FROM VALVE CONE (NO. 16) ASSEMBLY	4 CHANGE STEEL BALL (NO. 19)
3. THE FORKS LOWER AFTER EVERY PUMP STORKE	AIR IN THE HYDRAULIC SYSTEM	SEE REMEDY 1
	LEAK FROM THE VALVE CONE (NO. 16)	5 CHANGE VALVE CONE (NO. 16) VALVE HOUSING (NO. 17) O-RING (NO. 18) O-RING (NO. 13)
4. "LOWERING ACTION" DOES NOT FUNCTION OR LOWER SLOWLY	THE LOWERING ARM DOES NOT GO IN PROPERLY	6 ADJUST THE VALVE CHAIN WITH ADJUSTING NUT (NO. 73)
5. THE FORKS LOWER WHEN THE HANDLE IS IN THE NEUTRAL POSITION	THE LOWERING ARM DOES OPEN PROPERLY	SEE REMEDY 3
	LEAK FROM THE VALVE CONE	SEE REMEDY 5
	LEAK FROM U-CUP IN THE BOTTOM PLATE	7 CHANGE U-CUP (NO. 43)
6. FORKS RISE, WHEN VALVE HANDLE IS IN NEUTRAL POSITION		SEE REMEDY 3
7. OIL LEAKS FROM THE LOWERING ARM ASSEMBLY	O-RING DAMAGED OR) WORN OUT	8 CHANGE O-RING (NO. 32)

NOTE: WHEN OVERHAULING THE HYDRAULIC SYSTEM TOTAL CLEANLINESS SHOULD BE OBSERVED.
DISMANTLED PARTS SHOULD BE CAREFULLY CLEANED AND INSPECTED.
ALWAYS CHANGE O-RING AND U-CUPS.

CAUTION –
IF YOU ARE UNABLE TO SOLVE THE PROBLEM, CONTACT YOUR AUTHORIZED REPAIR CENTER.

WARRANTY:

- SIX MONTHS PARTS AND LABOR ON PUMP.
- 90 DAYS PARTS AND LABOR ON FRAME.
- WARRANTY PERIOD BEGINS TWO DAYS AFTER DEALER SHIP DATE TO CUSTOMER.