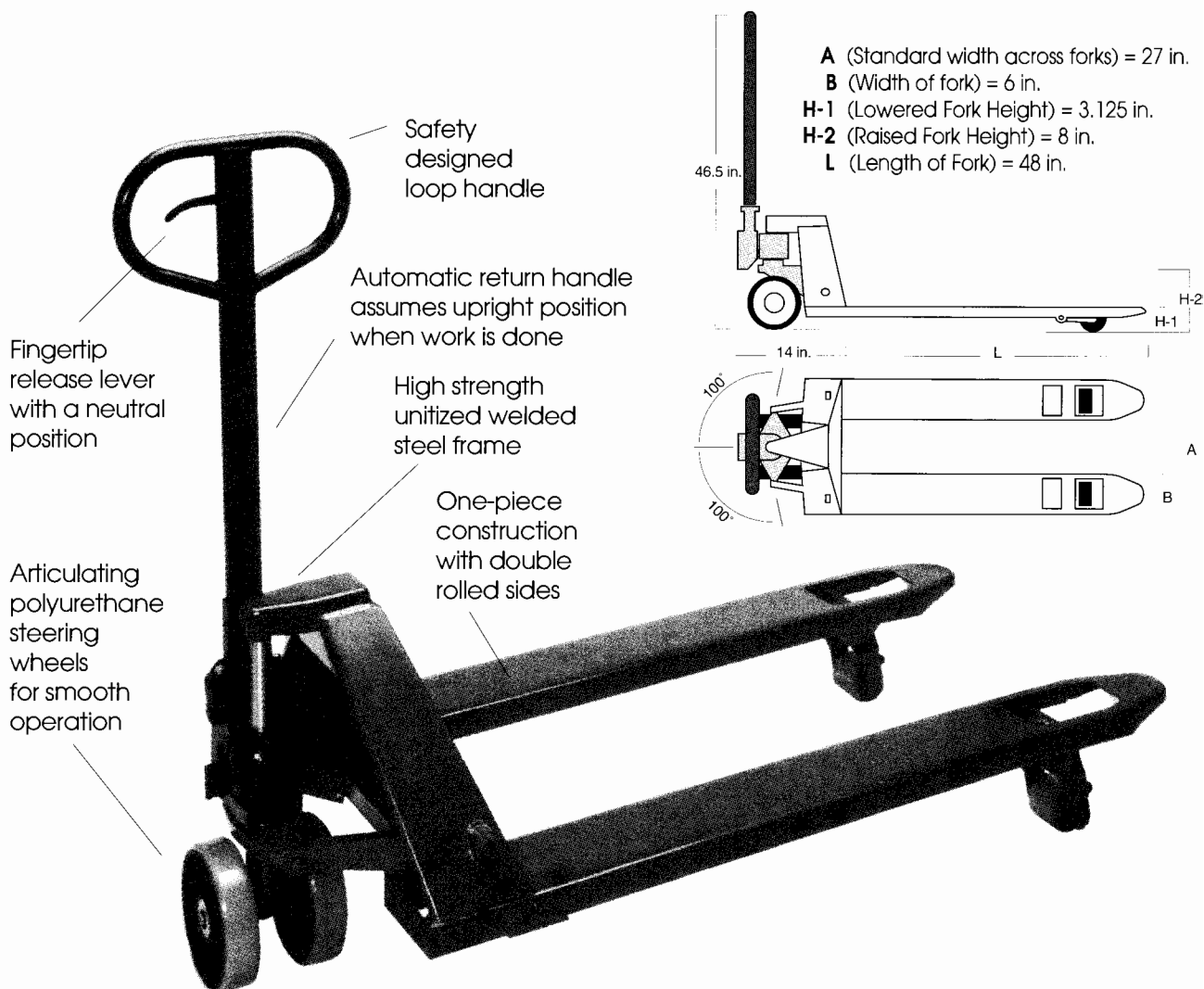


WIC 48-27-5000-94 INSTRUCTION MANUAL

PLEASE READ COMPLETELY BEFORE OPERATING



ASSEMBLY

1. TAKE OUT 3 PCS HEX BOLTS & WASHERS ON HANDLE BASE. (NO. 23)
2. PLACE THE HANDLE WITH CHAIN (NO. 68) ON HANDLE BASE (NO. 23). TIGHTEN 3 PCS HEX BOLTS.
3. PULL THE HANDLE DOWN, SLIP CHAIN THRU AXLE HOLE (NO. 21) AND INSERT THE CHAIN WITH THE KNOB INTO SLOT OF THE LOWERING ARM (NO. 35).

HOW TO OPERATE

1. HOLD RELEASE LEVER UP - TRUCK WILL LOWER.
2. LET RELEASE LEVER RETURN TO THE DOWN POSITION TO PUMP TRUCK UP.
3. THE NEUTRAL POSITION FREES HYDRAULIC PRESSURE MAKING MOVEMENT OF THE LOAD EASIER.
4. REFER TO OPERATIONS DIAGRAM ON THE BACK OF THE HANDLE.

MAINTENANCE

1. **DO NOT OVERLOAD**
2. WHEN JACK DOES NOT LIFT TO FULL HEIGHT - REMOVE OIL PLUG AND ADD HYDRAULIC FLUID.
3. **DO NOT LEAVE PALLET TRUCK UNDER LOAD.** WHEN NOT IN USE, RELEASE HYDRAULIC PRESSURE TO LOWER THE FORKS.

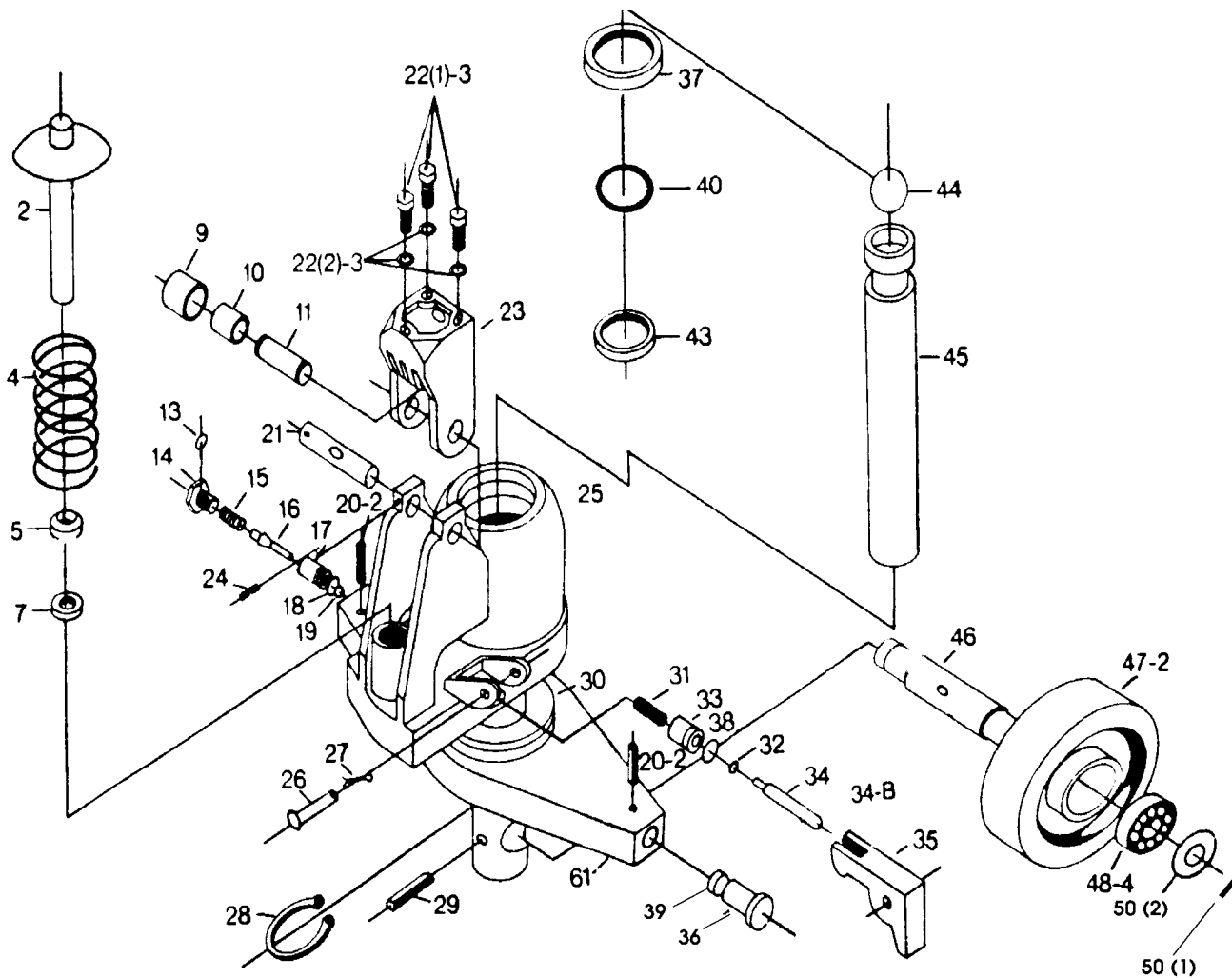

WESLEY
INTERNATIONAL
CORPORATION

RECOMMENDED OIL - DEXTRON II

P.O. Box 934
3680 Chestnut Street
Scottsdale, GA 30079

(404) 292-7441
(800) 241-2869
FAX (404) 292-8469

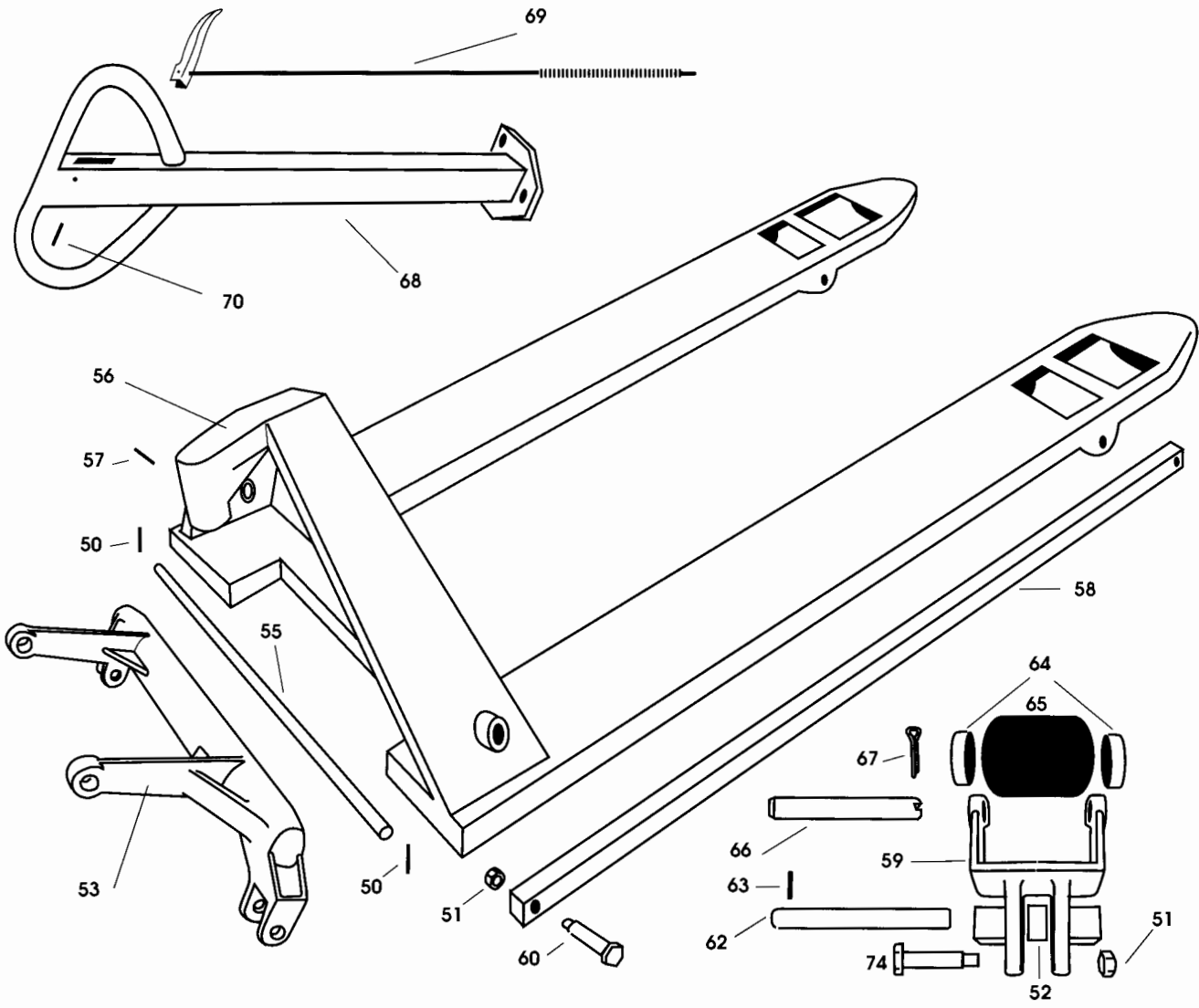
#	PART	DESCRIPTION	REQ.	#	PART	DESCRIPTION	REQ.
2	C-2	PUMP PISTON	1	27	C-27	PIN	1
4	C-4	SPRING, PISTON RETURN	1	28	C-28	LOCKING RING	1
5	C-5	DUST SEAL	1	29	C-29	SPRING PIN	1
7	C-7	U-PACKING	1	30	C-30-N	THRUST BEARING	1
9	C-9	ROLLER	1	31	C-31	SPRING	1
10	C-10	BUSHING	1	32	C-32	O-RING	1
11	C-11	AXLE	1	33	C-33	RELEASE HOUSING	1
13	C-13	PACKING	1	34	C-34	RELEASE PISTON	1
14	C-14	SCREW	1	35	C-35	LOWERING ARM	1
15	C-15	SPRING, HIGH PRESSURE	1	36	AA-36	TABLE BOLT	2
16	C-16	VALVE CONE	1	37	C-37	DUST SEAL	1
17	C-17	VALVE CONE HOUSING	1	38	C-38	O-RING	1
18	C-18	O-RING	1	39	AA-39	FLANGED NUT	2
19	C-19	BALL, LOW PRESSURE	1	40	C-40	O-RING	1
20	C-20-2	SPRING PIN	2	43	C-43	U PACKING	1
21	C-21	AXLE FOR HANDLE	1	44	AA-44	BALL	1
22	C-22(1)	HANDLE BOLTS	3	45	C-45	RAM PISTON	1
22	C-22(2)	SPRING WASHERS	3	46	C-46	WHEEL SHAFT	1
23	C-23	HANDLE BASE	1	47	C-47-2	STEERING WHEEL, POLYURETHANE	2
24	C-24	SPRING PIN	2	48	C-48-4	BALL BEARING	4
25	C-25	OIL PLUG	1	50	C-50(1)	SPRING PIN	2
26	C-26	AXLE PIN	1	50	C-50(2)	STEERING WHEEL CAP	2
				61	C-61	PRESSURE PLATE	1



#	PART	DESCRIPTION	REQ.
51	AA-51	LOCK NUT	4
52	AA-52	EXIT ROLLER	2
53	AA-53	SOLID BELLCRANK FOR 27 in. WIDE TRUCK	1
55	AA-55	TORSION ROD FOR 27 in. WIDE TRUCK	1
56	AA-56	FRAME, NOTE LENGTH, WIDTH AND WEIGHT CAPACITY	1
57	AA-57	ROLL PIN, .1875 in. x 1.5 in.	1
58	AA-58	PUSH RODS, NOTE LENGTH & LOWERED HEIGHT OF FORKS	2
59	AA-59	LOAD WHEEL FORK	2
60	AA-60	SHORT BOLT	2
62	AA-62	FORK AXLE	2
63	AA-63	ROLL PIN, .1875 in. x 2 in.	2
64	AA-64	BEARING, FOR BOTH STEERING & LOAD WHEELS	8
65	AA-65	LOAD WHEEL, 3X4 PM NOTE LOWERED TRUCK HEIGHT	2
66	AA-66	LOAD WHEEL AXLE	2
67	AA-67	COTTER PIN, LOAD WHEEL AXLE	2
68	C-68	STEERING HANDLE	1
69	C-69	RELEASE LEVER & LINKAGE	1
74	AA-74	LONG BOLT	2

- PLEASE NOTE -

Drawings are intended to illustrate the relation of parts to one another. Therefore, individual parts and assemblies MAY NOT BE IN ACTUAL RELATIVE SCALE



TROUBLE SHOOTING

APPLY REMEDIES IN THE ORDER SUGGESTED

THOROUGHLY CLEAN ALL DISMANTLED PARTS - ALWAYS REPLACE O-RINGS AND U-CUPS

	PROBLEM	PROBABLE CAUSE	REMEDY
1	JACK FEELS SPONGY OR DOES NOT LIFT WHEN THE HANDLE IS OPERATED	AIR IN THE HYDRAULIC SYSTEM OR INSUFFICIENT HYDRAULIC OIL	HOLDING THE LEVER UP, PULL THE LOOP-HANDLE UP & DOWN SEVERAL TIMES REMOVE THE C-25 OIL PLUG AND ADD OIL
2	THE FORKS DO NOT RISE WHEN THE VALVE HANDLE IS IN THE LIFTING POSITION	INSUFFICIENT HYDRAULIC OIL OR C-19 BALL DOES NOT SEAT	REMOVE OIL PLUG AND ADD OIL: ADJUST THE VALVE CHAIN ADJUSTING NUT & CHECK THE C-34 RELEASE PLUNGER CHANGE C-19 STEEL BALL
3	THE FORKS LOWER AFTER EVERY PUMP STROKE	C-16 VALVE CONE HAS TRASH ON SEAT	CLEAN VALVE CONE SEAT CHANGE C-16 VALVE CONE; C-17 VALVE CONE HOUSING; C-18 O-RING
4	LOWERING ACTION DOES NOT FUNCTION OR LOWERS VERY SLOWLY	THE LOWERING ARM DOES NOT GO IN PROPERLY	ADJUST THE VALVE CHAIN ADJUSTING NUT CHECK C-34 RELEASE PLUNGER
5	THE FORKS LOWER WHEN THE TRUCK IS IN THE RAISED POSITION	LEAK FROM THE VALVE CONE OR LEAK FROM U-CUP IN THE BOTTOM PLATE	CLEAN VALVE CONE SEAT CHANGE C-16 VALVE CONE; C-17 VALVE HOUSING AND C-18 O-RING CHANGE C-43 U-CUP
6	THE FORKS RISE WHEN THE HANDLE IS IN THE NEUTRAL POSITION		ADJUST THE VALVE CHAIN ADJUSTING NUT
7	OIL LEAKS FROM THE LOWERING ARM ASSEMBLY	O-RING DAMAGED OR WORN	CHANGE C-32 O-RINGS

NOTE: WHEN OVERHAULING HYDRAULIC SYSTEM, TOTAL CLEANLINESS SHOULD BE OBSERVED. DISMANTLED PARTS SHOULD BE CAREFULLY CLEANED AND INSPECTED. ALWAYS REPLACE O-RINGS AND U-CUPS.

CAUTION! IF YOU ARE UNABLE TO SOLVE THE PROBLEM, CONTACT YOUR AUTHORIZED REPAIR CENTER

WARRANTY:

- SIX MONTHS PARTS AND LABOR ON PUMP AND FRAME
- WARRANTY PERIOD BEGINS 2 DAYS AFTER DEALER SHIP DATE TO CUSTOMER